



# Oval Radiant Tube Heaters



**IMPROVED WARRANTY**  
Now offering: **10** year warranty for tubes  
& **3** year warranty for burner boxes  
on all V.2 Radiant Tube Heaters

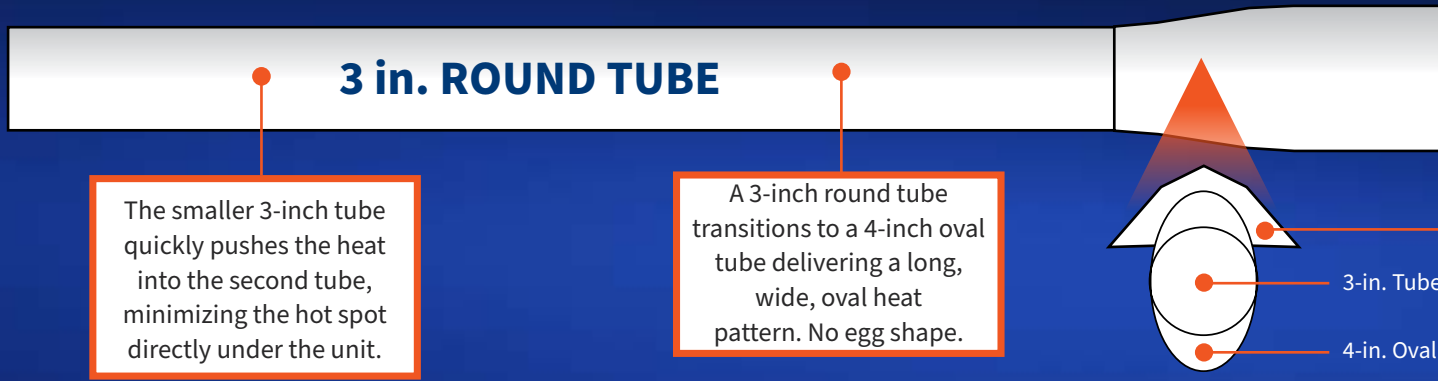


80,000 - 90,000 Btu/h

**MORE HEAT, WHERE YOU NEED IT!**



# Radiant Tube Heaters

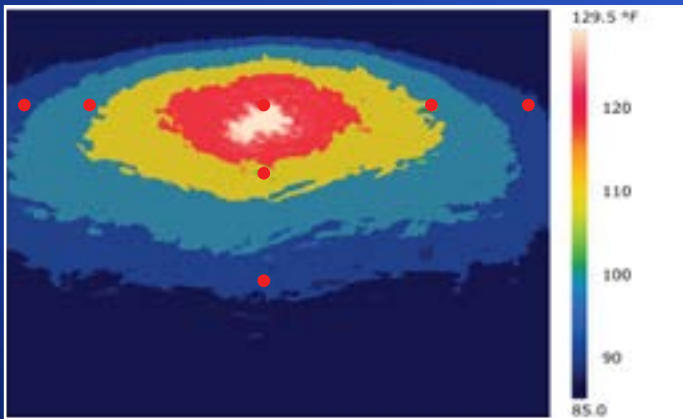


## Easy to Install!

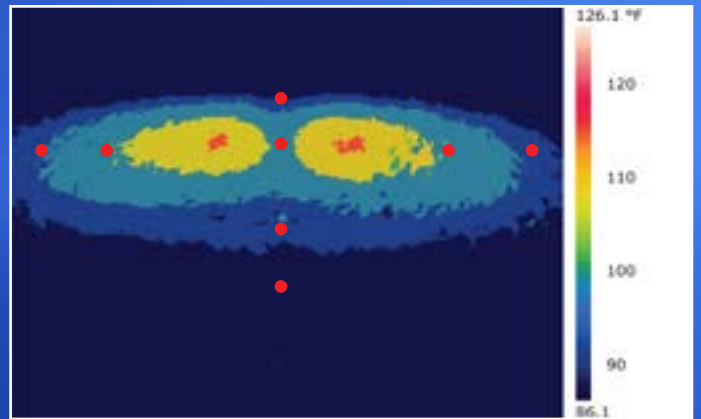
Our radiant heaters are 100% test fired at the factory and come with all the components you need for easy installation.



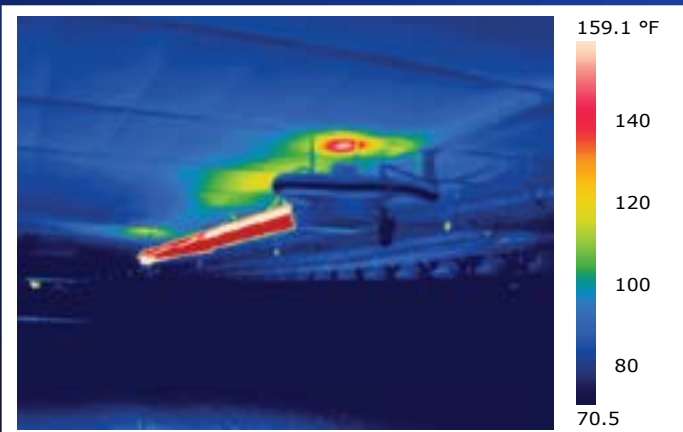
## More Heat to the Floor / Cooler Ceiling Temperature



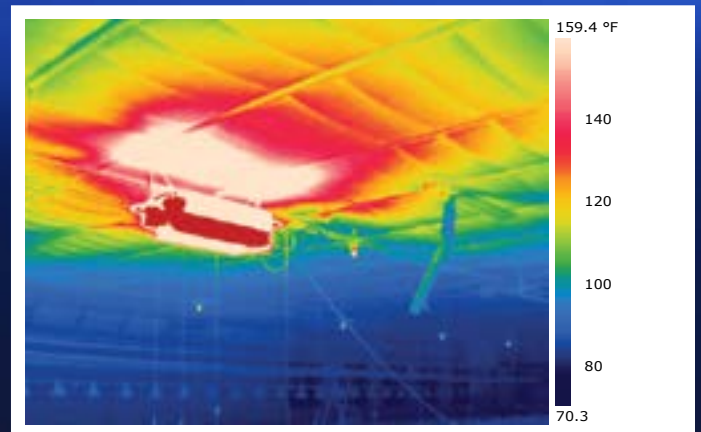
Oval 80s have longer, oval heat pattern.



Competitive Unit



Oval 80s' ceiling temperatures = 133°F. No need for insulation board above heater.



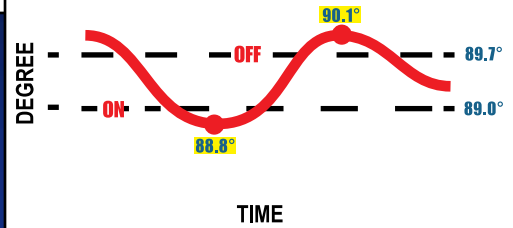
Competitive Ceiling Temperature (Max.) = 190.6°F.

## 4 in. OVAL

The unique reflector design, optimized for 80K Btu/h, maximizes the heat transfer to the sides, and minimizes the transfer of heat directly below.

The 4-inch oval shaped tube maximizes the radiant heat transmission to the sides due to the increased surface area directed to the side.

### Small Temperature Variation



## Easy to Use and Maintain!



Gas valve with higher durability



Easier access service panel for gas control valve



Easier-to-remove components



Brighter, easier-to-see indicator lights



More secure latching system



New valve mounting bracket



Air inlet relocated to follow heater tubes



Removable motor mount panel

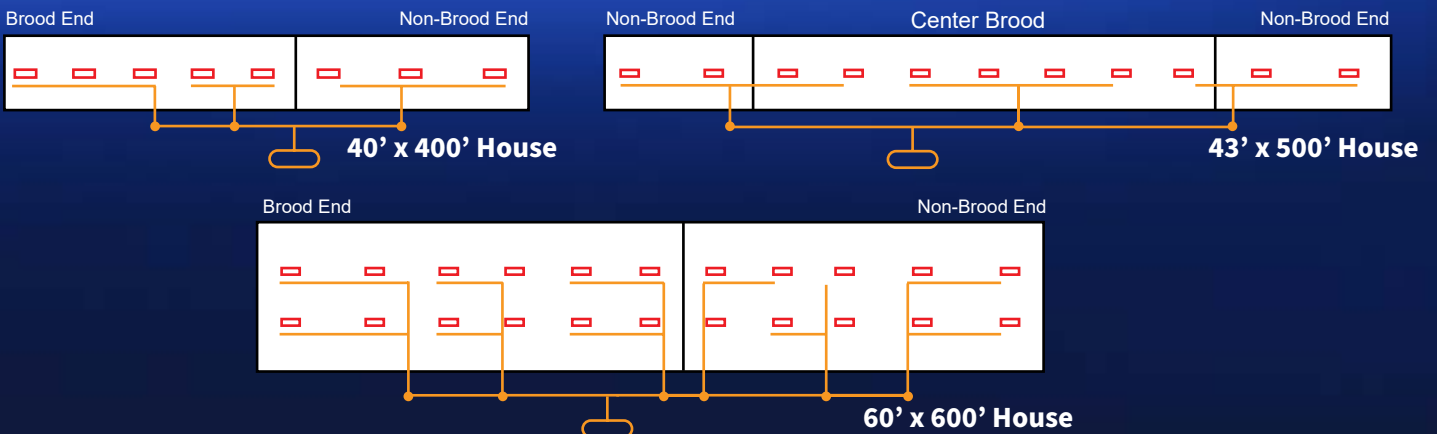


Rotated fan housing for easier reach



New air outlet duct

## Application - Example Heater Placement



# Oval Radiant Tube Heater Specifications

Model Numbers	Oval 80 <sup>®</sup> <i>v.2</i>	Oval 80 <sup>®</sup> <i>HP</i>	<b>NEW</b> Oval 90 <sup>™</sup> <i>v.2</i>
Maximum Input (Btu/h): Single Stage	80,000	80,000	90,000
Tube Length (ft.):	20	20	20
Gas Supply Pressure Acceptable for the Purpose of Input Adjustment - Propane (max/min) - Natural Gas (max/min)	13.5/11.0 in. W.C. 13.5/7.0 in. W.C.	5.0 PSIG 5.0 PSIG	13.5/11.0 in. W.C. 13.5/7.0 in. W.C.
Fuel Consumption (max.): - Liquid Propane Gas (lbs./hr.) - Natural Gas (cu. ft./hr.)	3.7 80	3.7 80	3.7 80
Ventilation (CFM):	140	140	140
Spark Ignition:	Yes	Yes	Yes
Temperature Controls Available: - Individual Thermostat Control - Wired to House Environmental Control	Yes Yes	Yes Yes	Yes Yes
Electrical Requirements (Volts / Hz / Phase):	115 / 60 / 1	115 / 60 / 1	115 / 60 / 1
Minimum Clearance to Combustibles (ft.): - Top - Side - Discharge End - Below Radiant Tubes	1 2.5 6 5	1 2.5 6 5	1 2.5 6 5
Heater Case Dimensions (in.): - Height - Width - Length	9.75 16 25.5	9.75 16 25.5	9.75 16 25.5
Net Weight (lbs.):	81	81	81
Shipping Weight (lbs.):	350*	350*	350*
Reflector Material:	Polished Aluminum	Polished Aluminum	Polished Aluminum
Tube Material:	Calorized Steel	Calorized Steels	Calorized Steels
3/8" x 6' Gas Hose:	S	S	S
Hanging Hardware:	S	S	S
Regulator:	O	O	O
Piping Hardware, including gas shutoff:	O	O	O
Air Inlet Kit	O	O	O
Product Warranty	S: 10 years for tube/3 years for burner box		

Heaters ship standard to run at 0-2000 feet. To operate at higher altitudes, please note in order process to allow for appropriate deviation.

S = Standard  
O = Optional

## ONLINE RESOURCES

Visit [www.lbwhite.com](http://www.lbwhite.com) for frequently asked questions, owners manuals, maintenance videos, and dealer login access for open orders and recent invoices.



Innovative Climate Solutions

411 Mason Street, Onalaska, WI 54650  
800 345 7200 (toll free) or 608 783 5691  
608 783 6115 (fax)  
info@lbwhite.com | www.lbwhite.com

Your L.B. White Dealer:

CA RESIDENTS:

**WARNING**  
Cancer and reproductive harm. See  
[www.P65Warnings.ca.gov](http://www.P65Warnings.ca.gov).

© 2023 L.B. White Company  
All rights reserved.  
All specifications are subject  
to change without notice.