

INSTALLATION INSTRUCTIONS



TRANSFORMER INSTALLATION

509615 & 573697

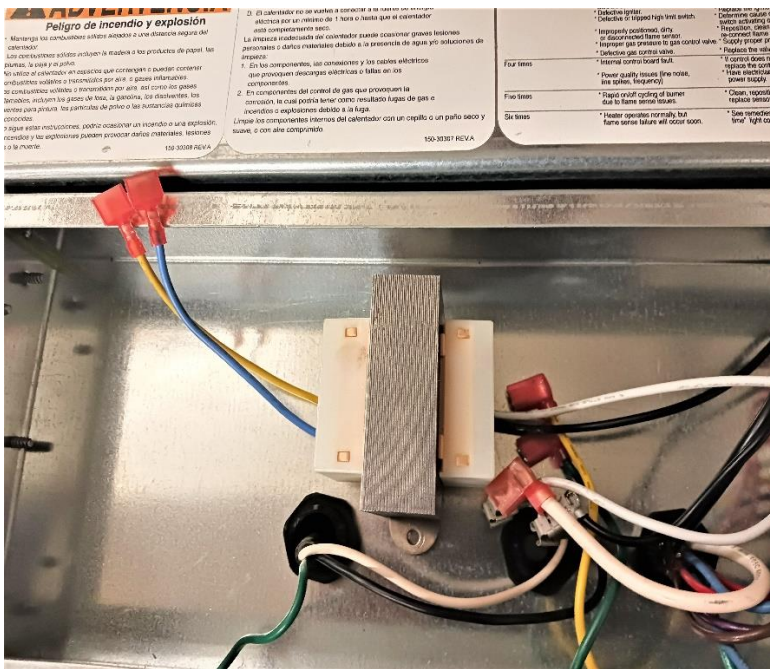
Due to supply chain issues, we are having to use an alternate transformer. Function and quality will remain the same, but the new transformer has a slightly larger mounting bracket and will require drilling a new hole as well as some minor changes in how it is wired.

Guardian, Therma Grow, Premier 350, and Tube Heaters Models: (573697)

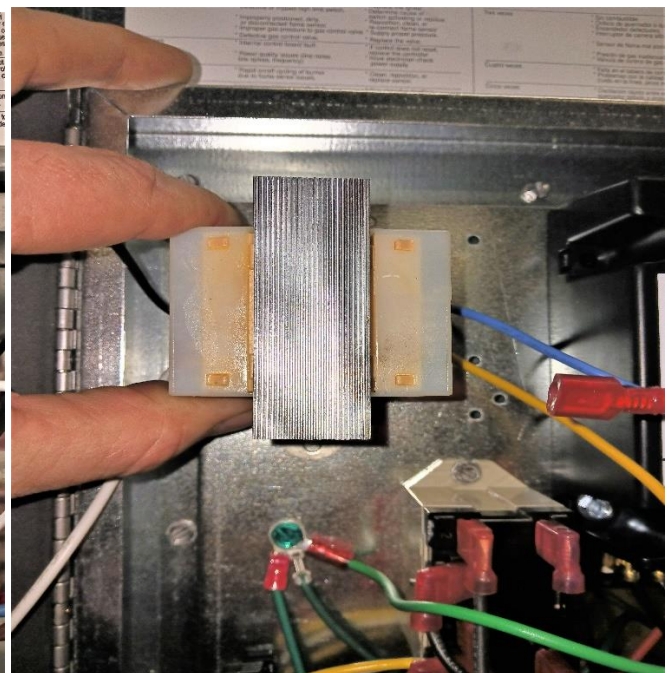
Installation:

Remove the transformer that will be replaced.

Guardian, Premier 350 Version 1, and Therma Grow: Align one of the replacement transformers mounting holes over one of the mounting holes on the control box. Use a marker to mark the new hole location in the mounting hole opposite. Remove the transformer and drill a hole in the spot marked using a 3/16" drill bit.

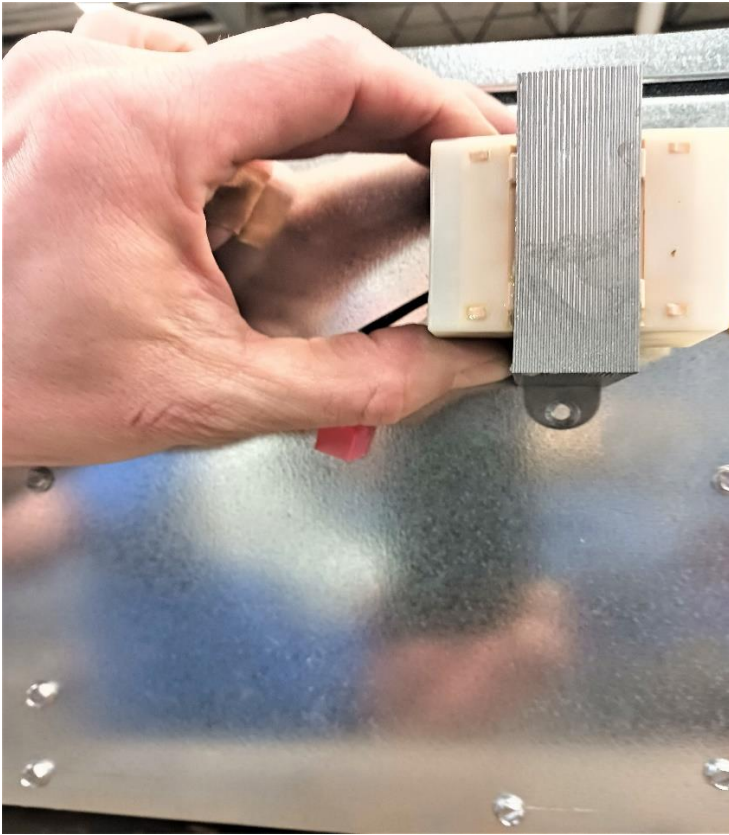


Guardian 60, 100, & 250 Pictured)

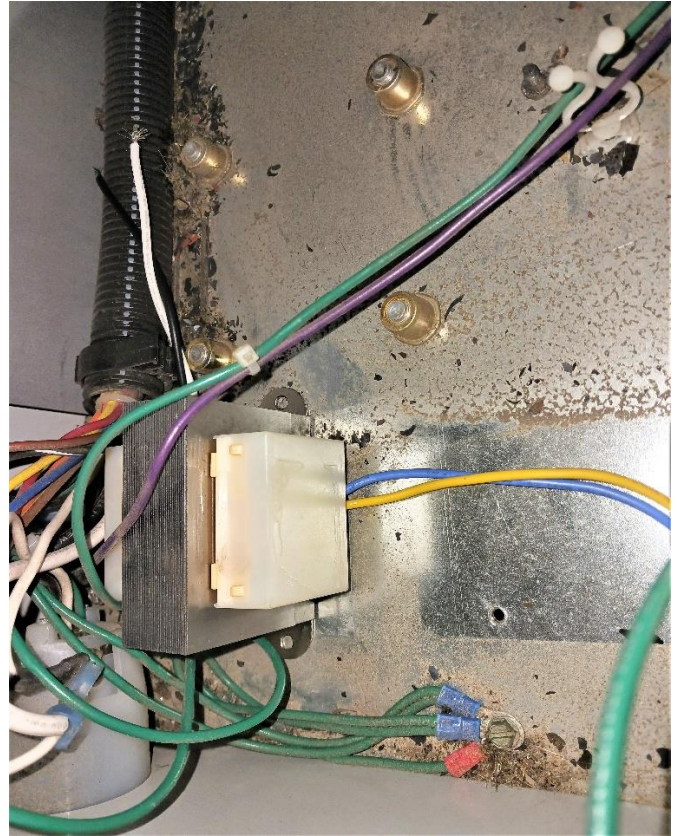


Premier 350 V1, Therma Grow ,and AW325(Pictured)

Tube Heaters: On the exterior of the case, align one of the replacement transformers mounting holes over one of the mounting holes on the case. Use a marker to mark the new hole location in the mounting hole opposite. Drill a hole in the spot marked using a 7/32" drill bit.



Sentinel



Premier 350 2.0

Premier 350 2.0 Models: Both holes will need to be drilled due to the new transformer being mounted on the base. Remove the burner cover to allow for more room. Remove the control board mount and remove the transformer from the mount. Align the new transformer on the base next to the area where the control mount is installed. Use a marker to mark the new hole locations. Remove the transformer and drill holes in the spots marked using a 3/16" drill bit.

Install replacement transformer using the original screws.

WIRING:

(If your model has flag terminals that connect to the transformer, they will need to be cut off and stripped to 1/2" as well as the terminals on the new transformer. If there are straight connectors, this will not need to be done.)

Connect the Yellow wire originally connected to the old transformer to the yellow wire on the new transformer. Connect the Green wire originally connected to the old transformer to the blue wire on the new transformer. Cut off terminals from the white and black wires that previously attached to the transformer and strip to 1/2". Twist the white wires together with the white wire from the new transformer and attach a wire nut. Twist the black wires together with the black wire from the new transformer and attach a wire nut.



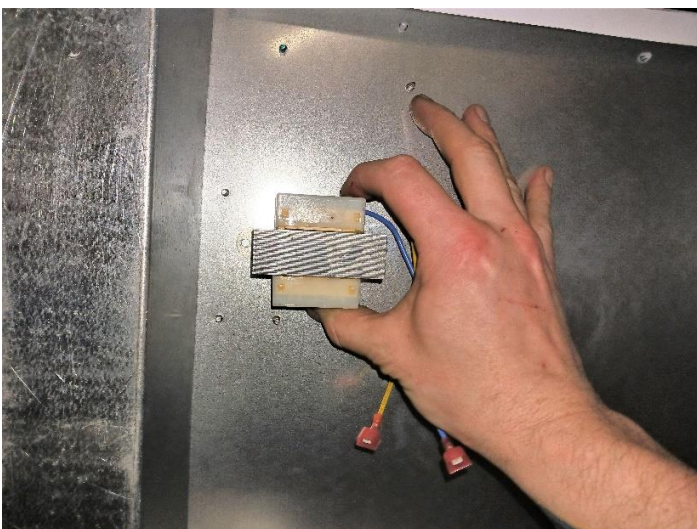
Guardian pictured with terminals cut off.

Premier Models: (509615)

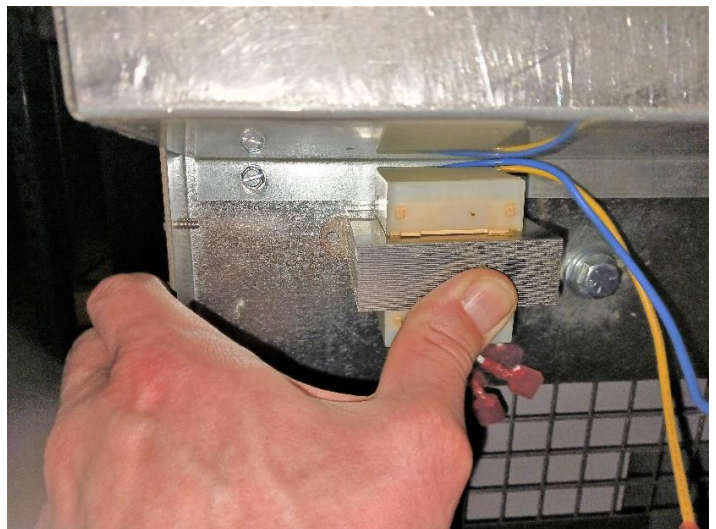
Installation:

Remove the transformer that will be replaced.

Premier 40, Premier 80, and Premier 170 Models: Lay the unit on its side and align one of the replacement transformers mounting holes over one of the mounting holes on the base. For **Premier 170** units, it may be necessary to remove the leg bracket. Use a marker to mark the new hole location in the mounting hole opposite. Drill a hole in the spot marked using a 3/16" drill bit. For **Premier 40** units, it may be easier to remove and install the transformer with the case removed.



Premier 40

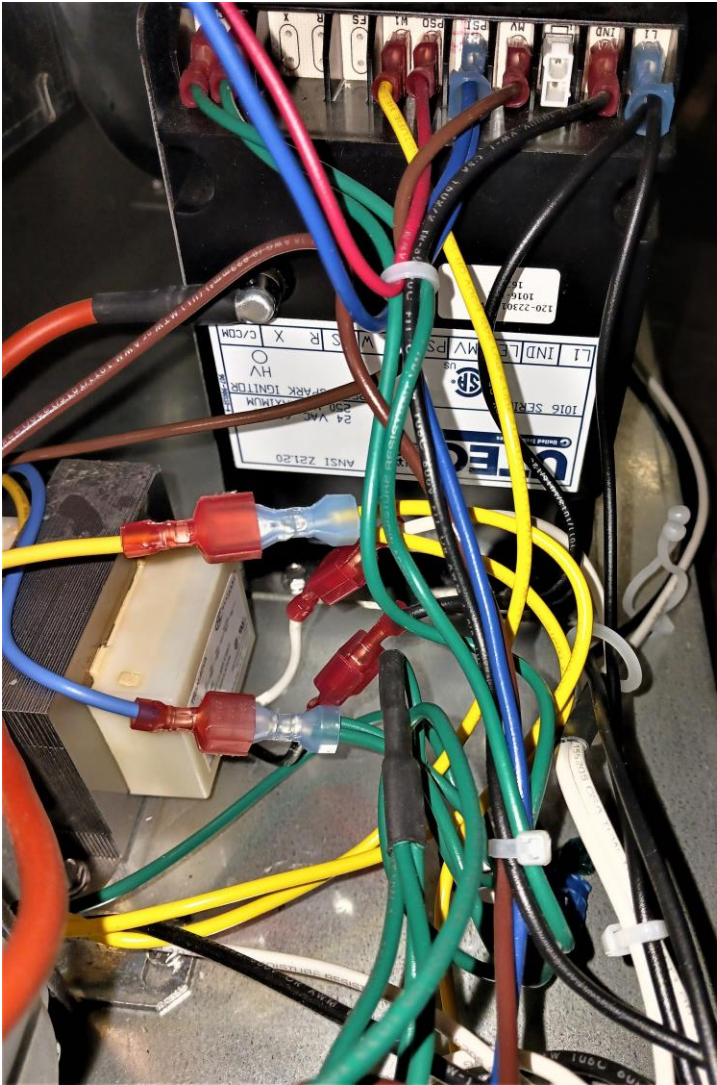


Premier 80

Install replacement transformer using the original screws.

WIRING:

Connect the Yellow wire originally connected to the old transformer to the yellow wire on the new transformer.
Connect the Green wire originally connected to the old transformer to the blue wire on the new transformer.
Connect the Black wire originally connected to the old transformer to the Black wire on the new transformer.
Connect the White wire originally connected to the old transformer to the White wire on the new transformer.



Premier 40 pictured

Service

Contact your local L.B. White dealer for replacement Parts and service. You may also call the L.B. White Company, LLC at 1-800-345-7200, for assistance, or Email us at customerservice@lbwhite.com

Be sure that you have your heater model number and Configuration number when calling.



WORLD PRVIDER – INNOVATIVE
HEATING SOLUTIONS
411 Mason Street, Onalaska, Wi 54650
800-345-7200 • 608-783-5691
608-783-6115 (fax)
www.lbwhite.com