

# ASSEMBLY and INSTALLATION INSTRUCTIONS



## BI-FOLD DOORS

View these instructions online at [www.lbwhite.com](http://www.lbwhite.com)

1. Clean surface around door opening with a good cleaner, let completely dry. Attach double bulb seal, apply plenty of pressure to seal tape. You may need to run flat head screws through flat part of seal, especially in colder temperatures (screws not provided). See Fig. 1.

*\*side seal must be even with or 1/8" into door opening, and top seal must be 3" above door opening.*

**FIG. 1**



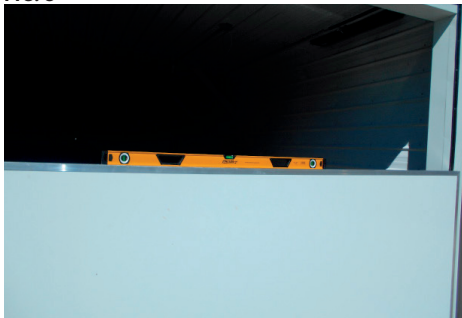
2. Insert cable/whl bracket into bottom door panel with self drilling screw (provided). Set bottom door panel in place, on top of 1 1/4" spacer block so bottom seal does not smash flat. See Fig. 2.

**FIG. 2**



3. Divide panel evenly from side to side on your door jam. Level bottom panel, you may need to adjust bottom spacer blocks if concrete is not level. Your panel needs to be level. See Fig. 3.

**FIG. 3**



4. Mount over center latches on inside to hold panel in place (1" pancake head screws provided). There is a backer laminated into top corners of the bottom panel to mount the catch. Backers will be roughly 4 1/2" wide to 9" up and down. Mount latch and catch toward bottom of backer. Only snug latches a little. DO NOT OVER TIGHTEN LATCHES. See Fig. 4.

**FIG. 4**



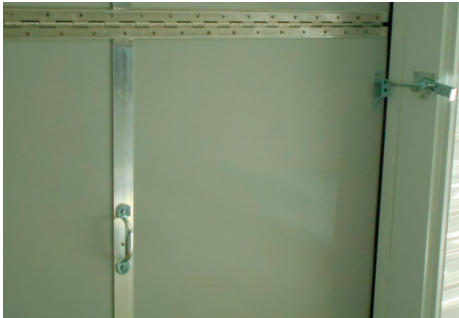
5. Set top panel on top of bottom panel, even on sides. One person will need to hold top panel in place. See Fig. 5.

**FIG. 5**



6. One person holding top panel from outside; flip inside center hinge down over bottom panel. Check to assure even spacing between top and bottom panel. Run several screws in center hinge to hold in place. (#8 x 3/4 hex hd self drilling screws provided) It is now ready to fasten outside top hinge (1 1/2 pancake head screws provided) and all remaining inside center hinge screws. Mount pull handle as shown and pull rope to center of inside bottom channel with small bracket; provided. Put eye lag into 2" alum flat pcs 16"-20" above rope bracket to hang up pull rope when door is closed. See Fig. 6.  
*\*This will keep rope up out of dirt+ litter. Remember to take pull rope out of eye lag as door opens.*

**FIG. 6**



7. Mount bi-fold Z track 1 1/2 pancake screws provided. Spacing 2 1/2 minimum between door panel and flat part of Z track. 2 3/4 works best. Z track should be about 6" higher than door opening. See Fig. 7.

**FIG. 7**



8. Mount pulley and brackets with 1 1/2 lags provided. You have left side and right side brackets. Lag holes should be toward center, pulleys should angle out slightly. See Fig. 8.

**FIG. 8**



9. Pull cables up through pulley, loop through eye of counter weight. Use 2 cable clamps (provided) to assure proper hold. Weights should be up close to pulleys but not above top of Z track. Trim off any access cable. See Fig. 9.

**FIG. 9**



10. Clean above top outside hinge with a good cleaner or solvent, let completely dry. Attach 4" rubber flat to header above hinge so bottom of 4" rubber flat hangs out just slightly over door panel. You may need to run screws through seal tape to hold in colder temperatures. See Fig. 10.

**FIG. 10**



11. It is now ready to open door, make sure all ladders and equipment are removed away from outside of door. Open latches and push out slowly. Remember to take pull rope out of eye lag. See Fig. 11.

**FIG. 11**



12. Door closed. See Fig. 12.

**FIG. 12**



13. Door opening. See Fig. 13.

**FIG. 13**



14. Door fully open outside. See Fig. 14.

**FIG. 14**



15. Door fully open inside. See Fig. 15.

**FIG. 15**



18. Small rubber flat mounted to bottom. See Fig. 18.

**FIG. 18**



16. Safety bar closed position. See Fig. 16.

**FIG. 16**



19. Finished door inside. See Fig. 19.

**FIG. 19**



17. Safety bar open position. See Fig. 17.

**FIG. 17**



12. Finished door outside. See Fig. 20.

**FIG. 20**



Contact your local L.B. White dealer for further technical support and service.  
You may also call L.B. White at 800-345-7200 or email us at [customerservice@lbwhite.com](mailto:customerservice@lbwhite.com).